



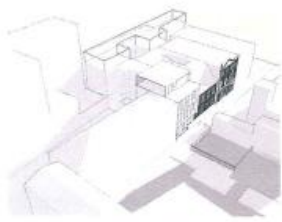
Phase Three : Wilkes Place



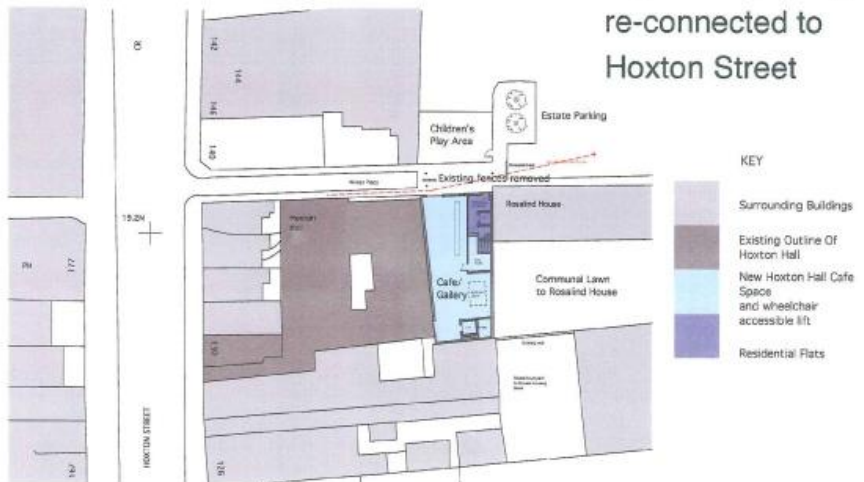
Existing view of Hoxton Hall from the Rosalind House Car Park

- Wilkes Place opened up as a through route
- Public realm improved
- New entrance to Hoxton Hall
- New infill building completes the street scene
- Adjacent housing is re-connected to Hoxton Street

View of Hoxton Hall from the Rosalind House Car Park with new housing and foyer entrance



Aerial view showing existing gap infilled and a new pedestrian route through Wilkes Place



Existing view of Wilkes Place showing fences across the street



View of Wilkes Place showing fences removed and a new larger building with flats above